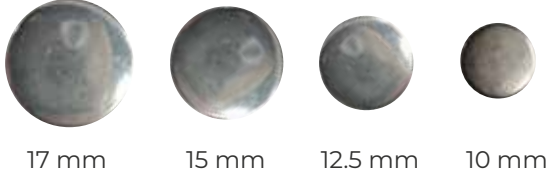


SNAP BUTTON CAPS

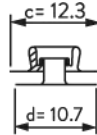
MATERIAL AVAILABILITY

BRASS
STEEL
STAINLESS S.

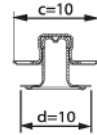
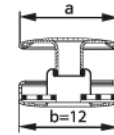


UNDERPARTS

406



280



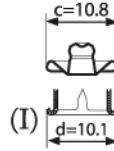
405



380

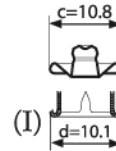
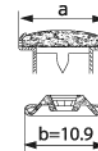


333c

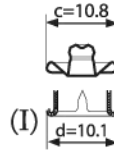


222

DOUBLE CROWN



333P



T13 PLASTIC



1414 PLASTIC



The materials shown in samples above are for demonstrational purposes only, all designs and models can be produced in the desired material.

